



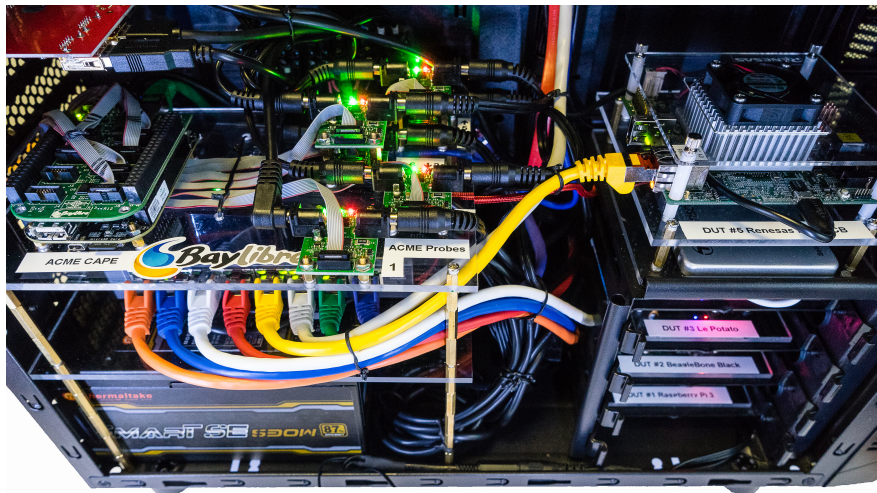
Lava Box: a Continuous Integration (CI) lab in a box

Patrick Titiano / Kevin Hilman



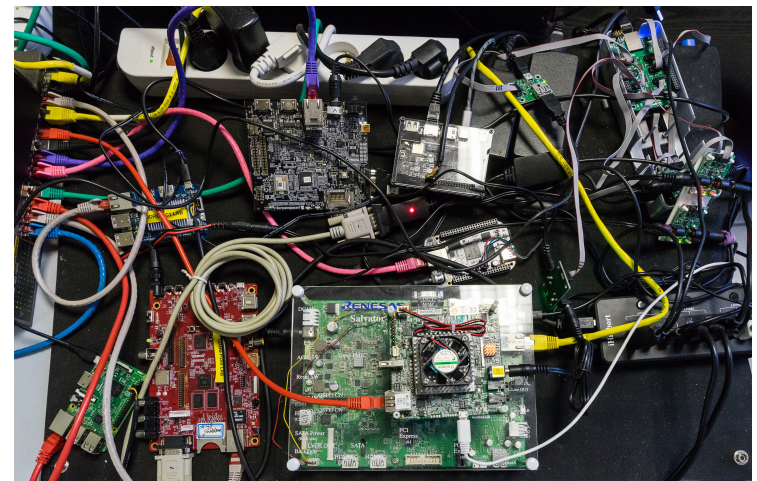
What is demonstrated

- Complete Turn-key CI LAVA Lab, including:
 - Preconfigured LAVA Master & Slave (dockers)
 - 6 preconfigured DUT (Devices Under Test)
 - Runs AGL / KernelCI / Custom jobs



What was improved

- Low-cost All-in-One 6-DUT Lab in a single PC case
- Preconfigured LAVA dockers & DUT ready to run KernelCI/AGL jobs
- Easier & safer to maintain



Hardware Information

Baylibre ACME Cape for power control and measurement
DUT: Renesas Starter Kit Pro (R-Car M3), SABRELite (NXP i.MX6),
Le Potato Board (Amlogic S905x), DragonBoard (QCOM 410C),
Raspberry Pi 3 (Broadcom BCM2837), BeagleBone Black (TI AM335x)

Source code or detail technical information availability

www.baylibre.com/acme/
www.kernelci.org/wiki.linaro.org/LAVA
www.automotivelinux.org